

# Commodity restriction

## What is the change

- If shipment found with restricted commodity
  - ❖ Stop cargo loading
  - ❖ If loaded, then hold at transshipment port or destination. Either initiate return back to origin or change destination
  - ❖ Incorporate process for approval / documents follow up, if required to proceed

## Why the change

- In current set up
  - Shipments reach destination without stoppage
  - Shipments end up incurring storage & demurrage charges.
  - If cannot be routed to another country, eventually have to be abandoned or auctioned

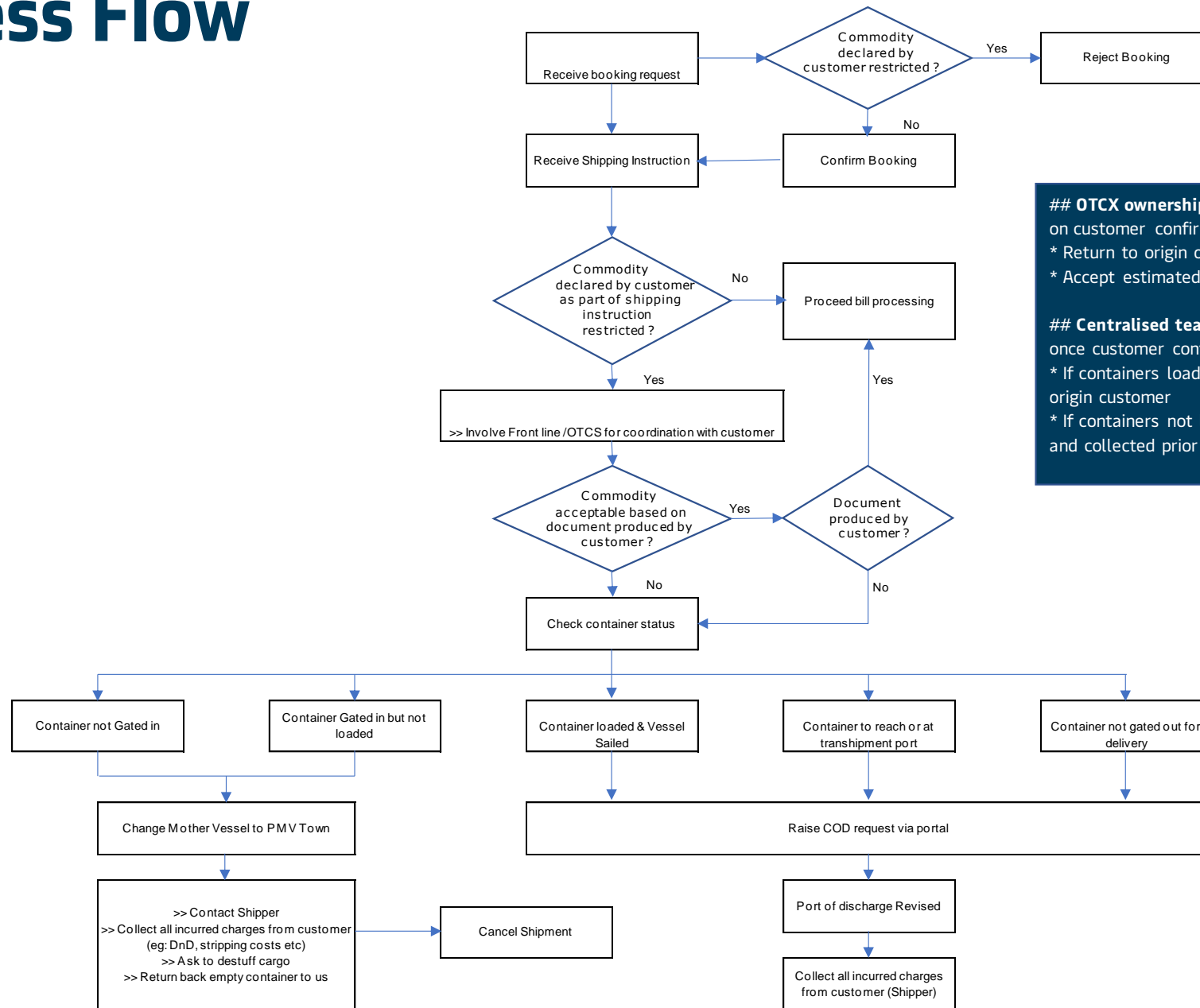
## Centralised team proposal

- Expertise required to handle shipments with restricted commodity
- Governance around accuracy of appropriate charge application
- OTCX coordination with customer for way ahead

- Restricted commodities per country will be updated on website
- Related website link will be included on Booking confirmation



# Process Flow



**## OTCX ownership** - COD request to be raised based on customer confirmation on below  
 \* Return to origin or COD  
 \* Accept estimated COD costs

**## Centralised team ownership** - Revise charges once customer confirms  
 \* If containers loaded - all costs charged back to origin customer  
 \* If containers not loaded - Extra costs to be billed and collected prior cancelling shipment

